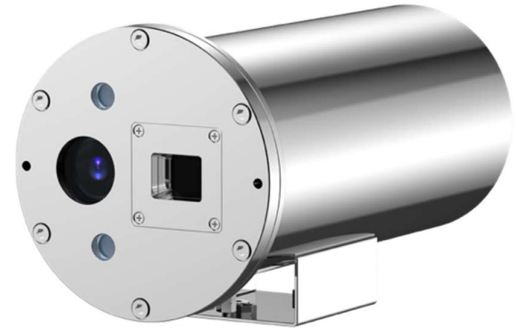


## IQV-EX-458-BO Series

### EXPLOSION PROOF BI-SPECTRUM CAMERA

with 2MP 36× Optical Zoom and 640×512 Thermal Imaging, ONVIF Compliant

The IQV-EX-458-BO Series Explosion-Proof Bi-Spectrum Camera is designed for reliable thermal and visual monitoring in demanding environments. It features a 2MP optical camera with 36× optical zoom and a 640×512 high-resolution thermal sensor with a 12µm pixel pitch, enabling long-range imaging and fire detection. Designed for proactive threat detection, the camera supports AI-powered analytics such as dual-spectrum intrusion detection, tripwire alerts, and intelligent classification of humans, vehicles, and boats. It's rugged AISI316L stainless steel housing ensures durability in extreme weather conditions and offers comprehensive protection against dust, water, lightning, and surge, certified to IP66/68/69 standards. Ideal for perimeter defense, industrial safety, and asset protection.



### Additional Features

- Certification for Hazardous Areas
- Certifies for hazardous zones 1, 2, 21, 22
- Protection Level of IP66/68/69
- True Day/Night Function
- Real-Time Full HD (1080p) Output
- 12µm Thermal Imaging Sensor with Long-Range Detection
- AI-Powered Video Analytics: Intrusion, Line Crossing,
- Human/Vehicle/Boat Classification, Fire Detection
- Electronic Image Stabilization
- ONVIF Compatibility



### TECHNICAL INFORMATION

GENERAL & MECHANICAL	
Ambient Temperature	-40°C to +60°C
Ingress Protection	IP66, IP68 (2m, 2h) & IP69
Operating Voltages	AC 100–240V / AC 24V (50/60Hz); DC 24V / DC 12V / PoE++ (48V DC); ≤ 2A
Power Consumption	≤24W
Surge Protection	TVS 6000V Lightning and Surge Protection
Material	AISI316L Stainless Steel
Finishing	Optional: Electro-polished / Painting
Relative Humidity	≤95%
Mounting Options	Wall mount / Pole mount / Top pole mount
Dimensions (W x D x H)	Kindly refer to individual dimensions for each model.
Weight	Approximately 10.1 kg / 22.3lbs
Cable Gland Entries	M25x1.5, M27x1.25, M20x1.5, M32x1.5

CERTIFICATIONS & RATINGS	
Code	II 2 G Ex db IIC T6 Gb II 2 D Ex tb IIIC T80°C Db
IECEx Standards	IEC60079-0, IEC60079-1, IEC60079-31
ATEX	EN60079-0, EN60079-1, EN60079-31
NETWORK	
Interface	RJ45 10Base-T/100Base-TX
ONVIF	ONVIF (Profile S, Profile G)
Protocols	TCP/IP, ICMP, HTTP, HTTPS, FTP, DHCP, DNS, RTP, RTSP, RTCP, NTP, SMTP, SNMP, IPv6

## IQV-EX-458-BO Series

## EXPLOSION PROOF THERMAL CAMERA

## TECHNICAL INFORMATION

VISUAL CAMERA				
<b>Sensor</b>	2MP, 1/2.8" Progressive Scan CMOS			
<b>Resolution</b>	1920×1080 pixels			
<b>Frame Rate</b>	Main Stream: 25fps (1920×1080, 1280×960, 1280×720) at 50Hz; 30fps (1920×1080, 1280×960, 1280×720) at 60Hz Sub Stream: 25fps (704×576, 640×480, 352×288) at 50Hz; 30fps (704×480, 640×480, 352×240) at 60Hz Third Stream: 25fps (704×576, 640×480, 352×288) at 50Hz; 30fps (704×480, 640×480, 352×240) at 60Hz			
<b>Compression</b>	Video: H.265, H.264 Video Bit Rate: 32Kbps~16Mbps Audio: G.711a, G.711u, G.722.1, G.726, MP2L2, AAC, PCM Audio Bit Rate: 64Kbps (G.711), 16Kbps (G.722.1, G.726), 32~192Kbps (MP2L2), 16~64Kbps (AAC)			
<b>Minimum Illumination</b>	Color: 0.0005 Lux @(F1.67, AGC ON); B/W: 0.0001 Lux @(F1.67, AGC ON)			
<b>Shutter Speed</b>	1/25~1/100,000s; Supports Delayed Shutter			
<b>Day/Night Mode</b>	True Day/Night with IR-Cut Filter (ICR)			
<b>Lens</b>	Focal Length: 5.1mm~153mm Optical Zoom: 36x Digital Zoom: 16x Field of View: 55.27°×32.26° to 2.66°×1.51° Aperture: F1.67~F3.67 Close Focus Distance: 100mm~1500mm			
<b>Image Settings</b>	Color, Brightness, Sharpness, Contrast, Optical Defog, Electronic Image Stabilization			
<b>Alarm Linkage</b>	Video Recording, Snapshot, Email Alerts, Audible & Visual Alarms, Alarm Output			
<b>Analytics</b>	Fire Detection, Line Crossing Detection, Human/Vehicle/Boat Classification, Intrusion Detection			
DORI				
Zoom Position	Detect	Observe	Recognize	Identify
Wide (5.1 mm)	73.3m	29.3m	14.7m	7.3m
Tele (153 mm)	1985.0m	793.9m	396.9m	198.5m

THERMAL CAMERA		
<b>Image Sensor</b>	Vanadium Oxide Uncooled FPA	
<b>Resolution</b>	640x512 pixels	
<b>Spectral Range</b>	8~14µm	
<b>Pixel Pitch</b>	12µm	
<b>NETD</b>	≤35 mK (@F1.0, 25°C)	
<b>Focus Mode</b>	Athermalized Fixed Focus	
<b>Focal Length</b>	25mm	
<b>Field of View (FOV)</b>	17.4°×14°	
<b>Color Palettes</b>	10 Modes	
<b>Video Compression</b>	H.265/H.264	
<b>Main Stream</b>	25fps (1280×1024, 1024×768) at 50Hz; 30fps (1280×1024, 1024×768) at 60Hz	
<b>Sub-Stream</b>	25fps (640×512) at 50Hz; 30fps (640×512) at 60Hz	
<b>Smart Alarm</b>	Fire Point Detection	
LENS SELECTION		
Lens	FOV (H × V) [°] @ 640×512	Minimum Focus Distance
25mm	17.4° × 14° / 10.5° × 7.9°	0.316 m
35mm	12.5° × 10.0° / 7.5° × 5.6°	0.229 m
ACCESSORIES		
<b>Enclosures</b>	Explosion-proof Ex d Stainless Steel IP67 Control Box (various)	
<b>Glands</b>	Explosion-proof Ex d Stainless Steel Cable Gland (various)	
<b>Conduit</b>	Ex e Ex d IP66 IP67 Flexible Conduit (various)	
<b>Washer</b>	Explosion-proof Self-Washing System	
<b>Composite</b>	Optical, Power, LAN, Instrumentations (various)	